

PART OF THE SW. 1/4, OF SECTION 3, T.5N., R.2W., S.L.B. & M.

705

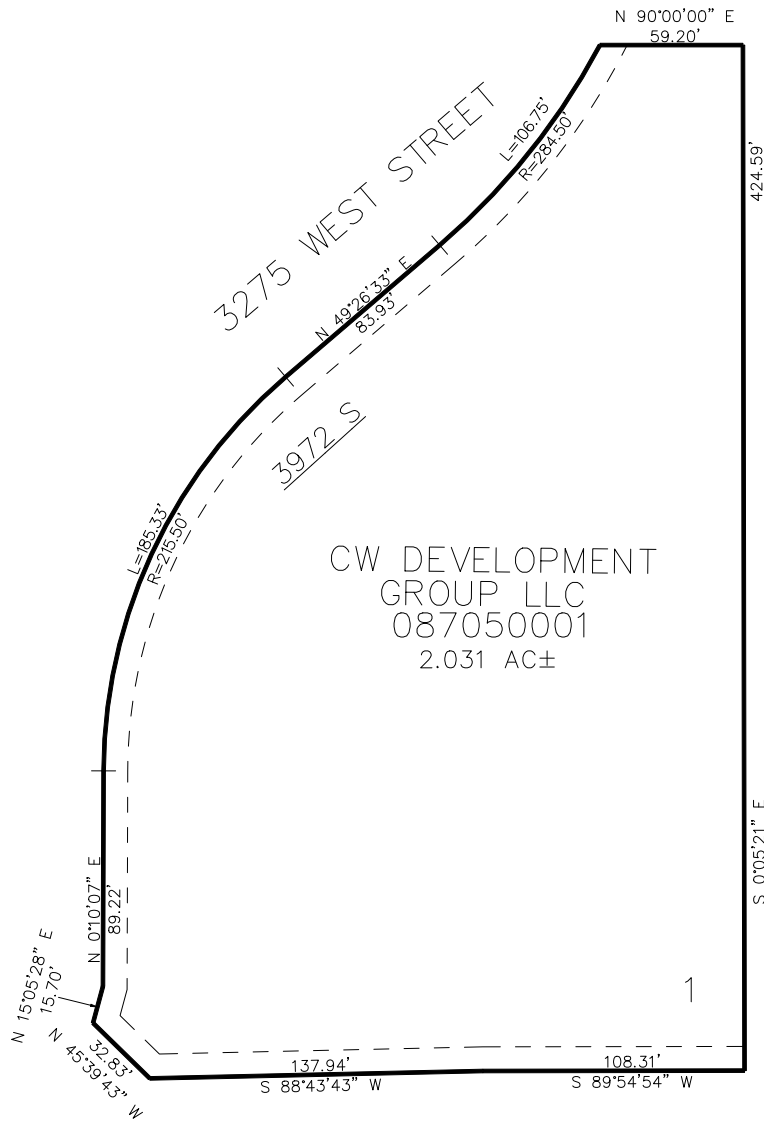
SALT POINT SUBDIVISION PARCEL A

IN WEST HAVEN CITY

TAXING UNIT: 324

SCALE 1" = 40'

SEE PAGE 34



SEE PAGE 34

4000 SOUTH STREET

10' UTILITY & DRAINAGE EASEMENTS EACH
SIDE OF PROPERTY LINES AS INDICATED
BY DASHED LINES EXCEPT AS OTHERWISE
SHOWN.

FOR COMPLETE SURVEY DATA SEE
ORIGINAL DEDICATION PLAT IN
BOOK 96, PAGE 46 OF RECORDS.

SEE PAGE 34